

CHRISTY TURNER FLAKING MILL ROLL DATA SHEET

Available in a High Quality Chilled Iron and Nickle Chrome this Spun Cast roll has high strength and durability using a high grade steel spindle.



FEATURES

- 460mm, 550mm & 600mm diameter rolls
- Various width options
- Chilled iron rolls manufactured from the highest quality spun cast chilled iron, allowing for a considerable number of regrinds

COOLING OPTIONS

- Non water-cooled rolls, generally used for bumping and flaking animal feed products.
- Through water-cooled, removed excessive heat from roll surface to eliminate chance of cooking product on roll surface.
- Supercooled, premium engineered roll to keep even constant temperature across full roll surface

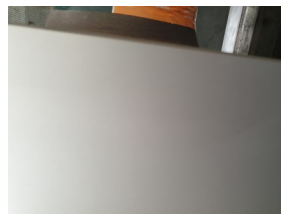
SURFACE FINISH

- Ground (inc tapers) finish 0.8Ra = N6 = bearing finish
- Matted, shot blast surface to assist product flowing through rolls
- Scratch fluted achieves high throughput, high quality flake.
- Fluted achieves high surface area of flake with high throughput.

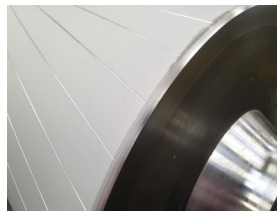
GROUND ROLL



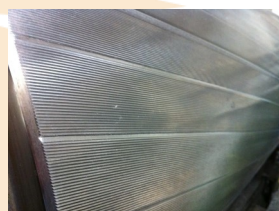
MATTED ROLL



MATT & SCRATCH



MICRONIZED

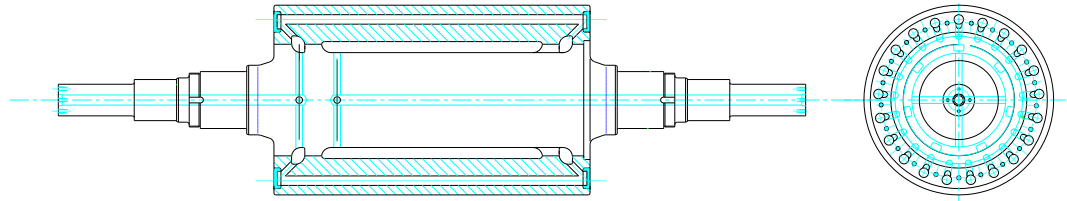


T +44 (0)1473 742325
F +44 (0)1473 462773
E info@christy-turner.com
W www.christy-turner.com

Christy Turner Ltd
Knightsdale Road
Ipswich
Suffolk
IP1 4LE
England

E R & F TURNER 550 FLAKING MILL

DATA & COOLING



SUPER-COOLED, SPUN CAST, Ni-Cr ALLOY CHILLED IRON ROLL WITH MULTY COOLING BORES.

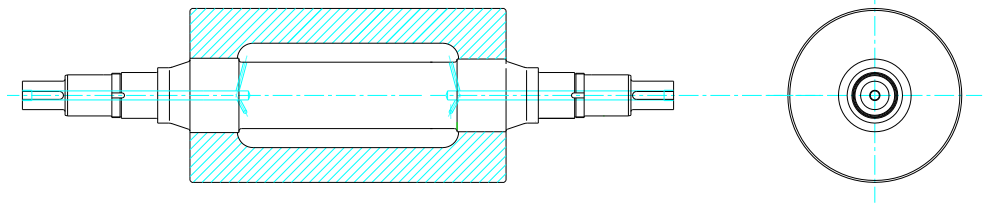
FITTED WITH FORGED STEEL SHAFT 330mm max dia (550 rolls)

350mm max dia (600 rolls)

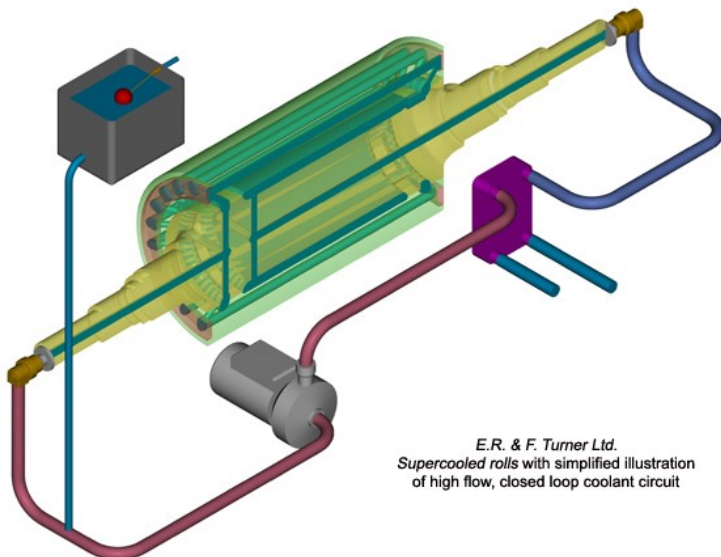
SURFACE HARDNESS 72-74 SHORE C SCLEROSCOPE.

STANDARD, SPUN CAST, Ni-Cr ALLOY CHILLED IRON ROLL
WITH INNER COOLING CHAMBER.

FITTED WITH STEEL SHAFT 230mm max dia (550 rolls)



SUPERCOOLED COOLING LAYOUT



*E.R. & F. Turner Ltd.
Supercooled rolls with simplified illustration
of high flow, closed loop coolant circuit*



T +44 (0)1473 742325

F +44 (0)1473 462773

E info@christy-turner.com

W www.christy-turner.com

Christy Turner Ltd

Knightsdale Road

Ipswich

Suffolk

IP1 4LE

England