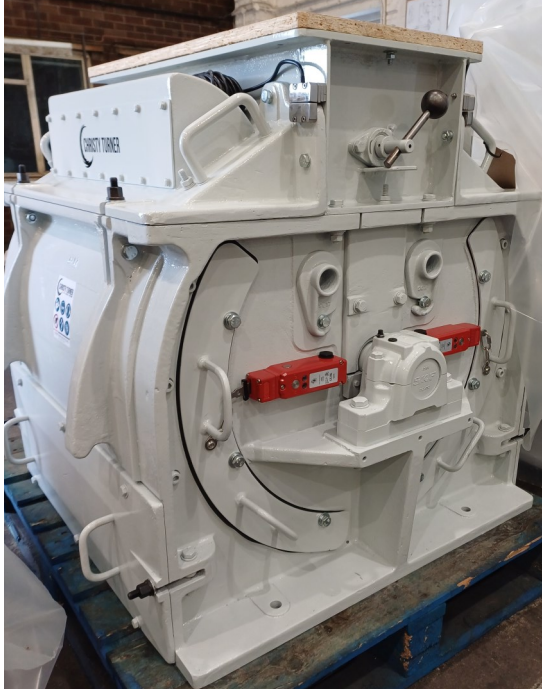


STOCK MACHINE (RECONDITIONED—MILL ONLY)

X26 DUAL ROTATION HAMMER MILL WITH SIL 3 SAFETY INTERLOCKS.



CURRENT SPEC

- **Total Screen Open Area 0.92m² (2 Screens)**
- **New Reversible Beaters (108 per set)**
- **New SKF Spherical Roller Bearings & Plummer Blocks Housings ready for PT100's**
- **Power to Unlock Interlocking on Screen Frames (up-to SIL3)**
- **Protection against unexpected start ups during regular tool change activities** Non contact safety switches
- **Manual Inlet Flap.**
- **UKCA/EC declaration of incorporation**

OPTIONAL EXTRAS

- **Motors options IE4 Zone 22; 90kW 110kW or 132kW**
- **Pneumatic Inlet Flap (Upgrade)**
- **Bedplate—Gravity or Suction**
- **Drive assembly including Atex Coupling (upgrade) and Drive Guard**
- **Screen—size to suit application**
- **Inlet & Control Panel (application dependent)**

PLEASE ENQUIRE FOR PRICE (INCLUDES 12 MONTH PART WARRANTY)

FURTHER INFORMATION AVAILABLE ON REQUEST.



T +44 (0)1473 742325

F +44 (0)1473 462773

E info@christy-turner.com

W www.christy-turner.com

Christy Turner Ltd
Knightsdale Road
Ipswich
Suffolk
IP1 4LE
England